



**FEATURES :**

- 10 Watt Package
- 4:1Wide Input Voltage
- 100% Burned In
- High Efficiency to 88%
- Customized Solutions Available
- Remote Control: On/Off
- UL94V-0 Package Material
- Operating Temperature:-40°C to +87°C
- 3 Years Warranty

Specifications typical at TA=25°C, nominal input voltage and rated output current unless otherwise specified

Part Number	Input Voltage	Input Current (mA TYP)		Output Voltage	Output Current	Efficiency	Capacitor Load
	Vdc	No-Load	Full Load	Vdc	Full Load (mA)	%TYP	uF MAX
61DW-24S03R3	9-36	60	497	3.3	3000	83	3300
61DW-24S05R3	9-36	60	484	5	2000	86	3300
61DW-24S12R3	9-36	40	474	12	835	88	330
61DW-24S15R3	9-36	20	483	15	665	86	330
61DW-24D05R3	9-36	70	502	±5	±1000	83	±2000
61DW-24D12R3	9-36	40	486	±12	±418	86	±330
61DW-24D15R3	9-36	40	484	±15	±333	86	±330
61DW-48S03R3	18-75	30	248	3.3	3000	83	5600
61DW-48S05R3	18-75	30	245	5	2000	85	5600
61DW-48S12R3	18-75	30	243	12	835	86	680
61DW-48S15R3	18-75	30	242	15	665	86	680
61DW-48D05R3	18-75	30	251	±5	±1000	83	±3300
61DW-48D12R3	18-75	30	243	±12	±418	86	±220
61DW-48D15R3	18-75	30	242	±15	±333	86	±220

DC-DC Converter

**61DW-R3 SERIES**

10Watt 1.5KV Isolated

4 : 1 Input Voltage Range

Single & Dual Output

2" x 1"



**Input Specifications**

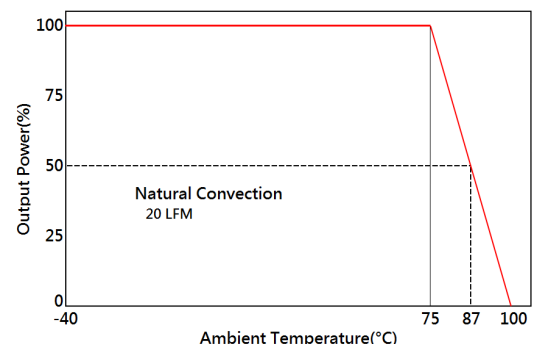
Parameters	Conditions	Min	Typ	Max	Units
Voltage Types				4:1	
Filter	PI TYPE				

**Output Specifications**

Parameters	Conditions	Min	Typ	Max	Units
Voltage Tolerance	Full load @Vin(nom.)			±2	%
Short Circuit Protection	Hiccup, automatic recovery				
Line Regulation				±0.5	%
Load Regulation	Single Dual(Balance Load)			±0.5 ±1.0	%
Cross Regulation	DUAL (25% to 100% Load)			±5	%
Ripple & Noise	Output:3-15V TYPES BW=DC To 20MHz			100	mVp-p
	Output > 15V TYPES BW=DC To 20MHz			1% of Vout	mVp-p
Transient response setting time	25% load step change		300		us



**Temperature Derating Graph**



www.yds.com.tw



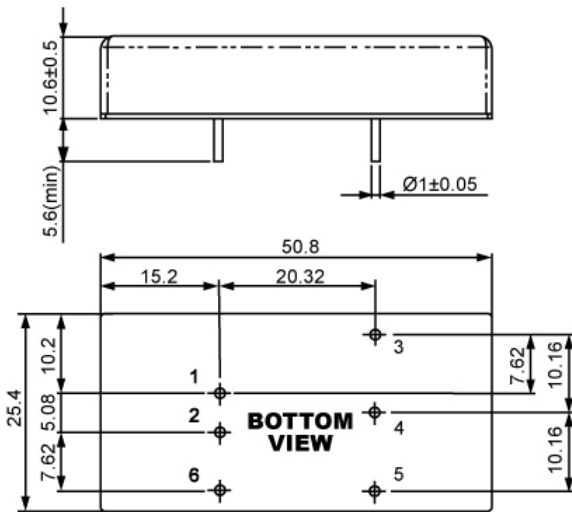
TEL : 886-6-3842899 FAX : 886-6-3843288  
E-MAIL : ydsweb@yds.com.tw

Rev: 0 2018/10/31

**General Specifications**

Parameters	Conditions	Min	Typ	Max	Units
Isolation Voltage			1500		Vdc
Isolation Resistance	500Vdc	1000			MΩ
Switching Frequency			300		KHz
Operating Temperature	With derating	-40		87	°C
Storage Temperature		-55		125	°C
Humidity	Non Condensing	5		95	%
Cooling	Natural Convection (20LFM)				
Case material	Nickel coated copper with no-conductive base				
MTBF	MIL-HDBK-217F@25°C	3.342x10 <sup>6</sup>			Hours
Weight			32.6		g
Dimensions		50.8x25.4x10.6			mm

**Dimension**



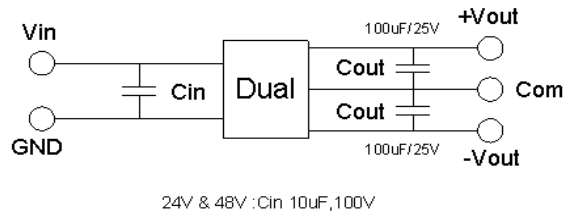
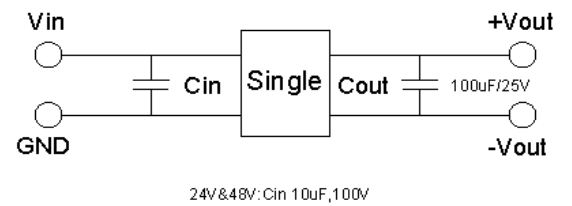
UNIT : mm  
Tolerances : XX.X ±0.5, XX.XX±0.25

**Part Number**

61DW - 24 S 03 R 3  
A B C D E F

- A: Series
- B: Input Voltage
- C: Single Output(S), Dual (D)
- D: Output Voltage
- E: Regulated(R)
- F: Package

**Recommended Test Circuit**



**PIN Assignment**

Pin	1	2	3	4	5	6
Single	+Vin	-Vin	+Vout	Trim	-Vout	Remote On/Off
Dual	+Vin	-Vin	+Vout	Com	-Vout	Remote On/Off