

FEATURES:

- 1X1 Tab-UP, 1" Long RJ45 with internal magnetics
- 16pin signal pin versions available
- Available with LEDs
- Suitable for CAT 5 & 6 Fast Ethernet Cable or better UTP
- Internal magnetics are 100% electrically tested for HI-POT and functionality
- Meet IEEE 802.3af standards with 350mA
- Meet IEEE 802.3at standards with 720mA



YUAN DEAN SCIENTIFIC



RJ45 Integrated Jack

56F(5G PoE) SERIES

With Magnetics

Single Port

5G Base-T

PoE & PoE+

TAB Up



Electrical Specifications@25°C-Operating Temperature 0°C to 70°C

Part Number	Turns Ratio (±3%)	LEDs	Insertion Loss (dB MAX)		Return Loss (dB MIN)		Crosstalk (dB TYP)		CDMR (dB TYP)	CMR (dB TYP)	POE Current	Hipot (Vdc) @60Hz
		L/R	1-125 MHz	125-250 MHz	1-40 MHz	40-250 MHz	1-125 MHz	125-250 MHz	10-250 MHz	30-250 MHz		
56F-2001DGD2NL	1CT:1CT	G&Y/ G	-1.0	-1.5	-20	-20+15log ₁₀ (f/40MHz)	-30	-25	-45+f/35dB	-30	350mA	2250
56F-20012DGD2NL	1CT:1CT	G&Y/ G	-1.0	-1.5	-20	-20+15log ₁₀ (f/40MHz)	-30	-25	-45+f/35dB	-30	720mA	2250

www.yds.com.tw


TEL : 886-6-3842899

FAX : 886-6-3843288

E-MAIL: ydsweb@yds.com.tw

Rev: 1 2020/09/15

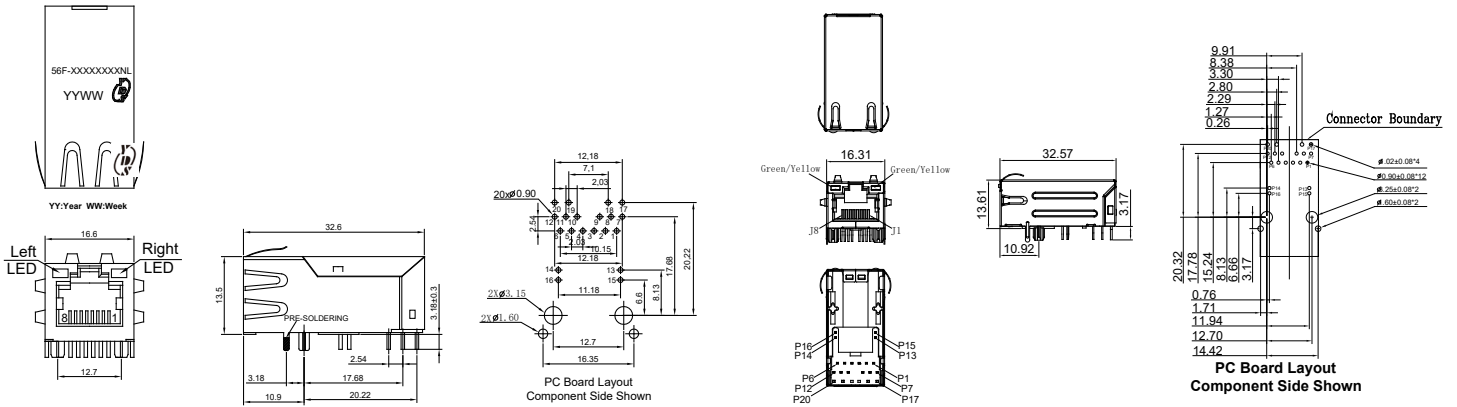
Electrical Specifications @25°C-Operating Temperature -40°C to 85°C

Part Number	Turns Ratio (±2%)	LEDs	Insertion Loss (dB MIN)				Return Loss (dB MIN)	Crosstalk (dB MIN)	CMR (dB MIN)			DCMR (dB MIN)	POE Current	Hipot (Vdc)
		L/R	1-50 MHz	50-125 MHz	125-250 MHz	1-40 MHz	40-250 MHz	1-250 MHz	1-40 MHz	40-100 MHz	100-250 MHz	1-250 MHz		@60Hz
56F-2001DDDZ2NL	1CT:1CT	G/Y & G/Y	-0.5	-1.2	-2.0	-16	$-16+10\log_{10}(f/40\text{MHz})$ $40 < f \leq 250$	-30	-30	-28	-26	-30	720mA	2250

Mechanical and Dimension

56F-2001DGD2NL&56F-20012DGD2NL

56F-2001DDDZ2NL



UNIT: mm Unless otherwise specified, all tolerances are ±0.25

Schematics

56F-2001XXXX

