

FEATURES:

- Meet IEEE 802.3 standards including 350 uH OCL with 8mA Bias
- Designed to withstand IR reflow temperatures up to 240°C
- Compact footprint use in the most space restrictive applications

YUAN DEAN SCIENTIFIC



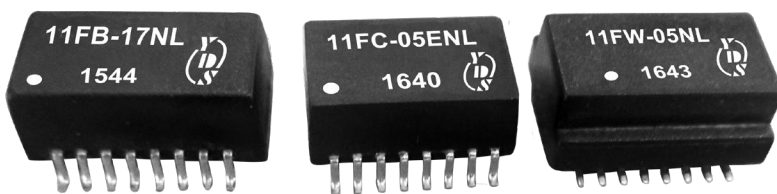
LAN Filters

11FB SERIES

10/100 Base-T

Single Port

Surface Mount Magnetics



Electrical Specifications@25°C-Operating Temperature -40°C to 85°C

Part Number	Turns Ratio (±5%)		Insertion Loss (dB MAX)	Return Loss (dB TYP)			Differential to Common Mode Rejection (dB MIN)			Crosstalk (dB TYP)			Hipot (Vrms) MIN
	TX	RX		1-100 MHz	30 MHz	60 MHz	80 MHz	30 MHz	50 MHz	100 MHz	30 MHz	60 MHz	
11FB-05NL	1CT:1CT	1CT:1CT	-1.0	-16	-10	-10	-40	-37	-33	-45	-40	-30	1500
11FC-09NL	1CT:1CT	1CT:1CT	-1.0	-18	-14	-12	-40	-40	-40	-35	-35	-35	1500
11FW-05NL	1CT:1CT	1CT:1CT	-1.1	-18	-15	-13	-	-	-	-	-	-35	1500

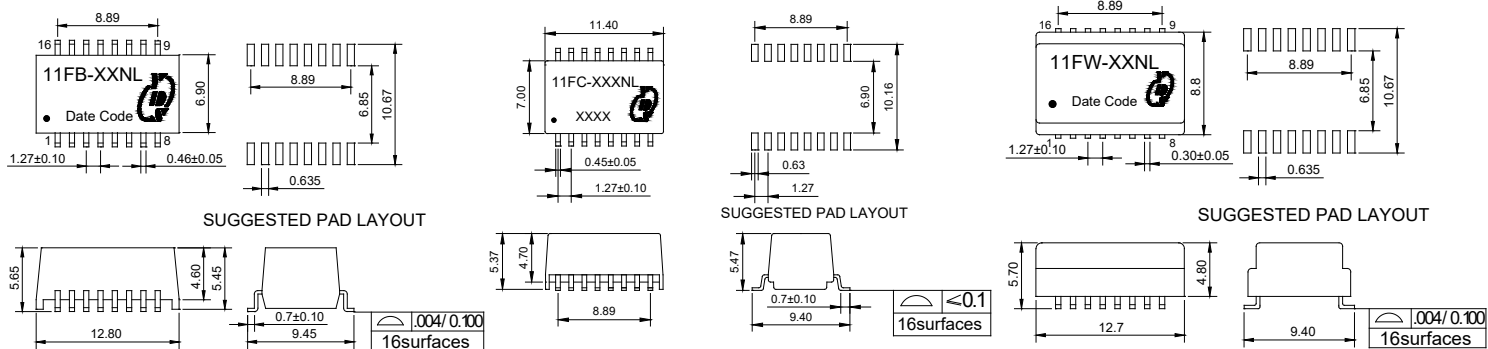


Mechanicals and Dimensions

11FB(Bottom Potting)

11FC(Bottom Potting)

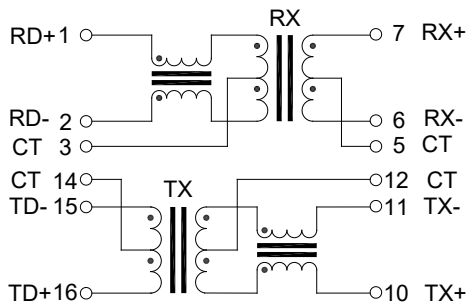
11FW(Bottom Potting)



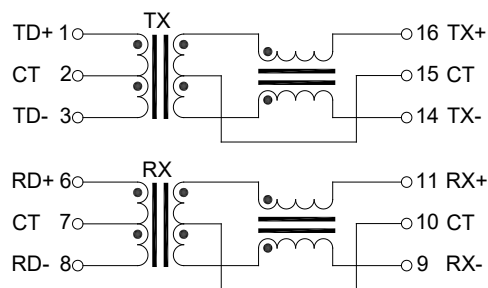
Unit: mm Unless otherwise specified, all tolerances are ±0.25

Schematics

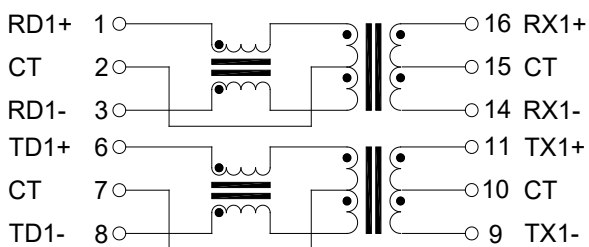
11F-01



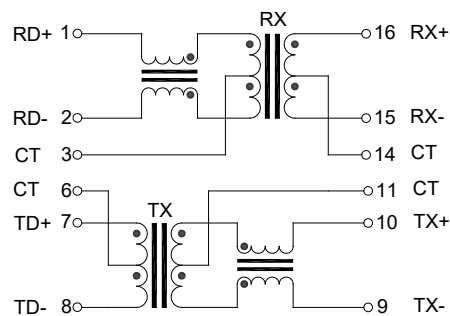
11F-05, 06, 07, 08, 11



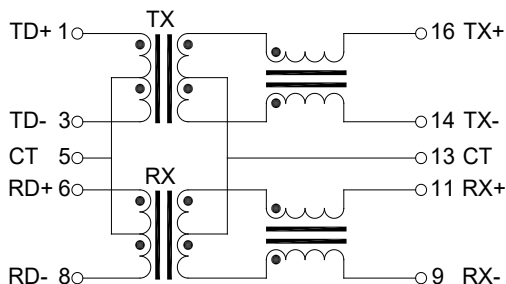
11F-09, 12



11F-10



11F-17



11F-44

